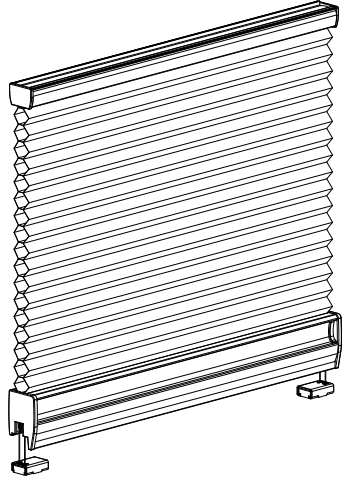


Read the instruction before operating your shade

Installation & Maintenance Instructions Honeycomb Shade SmartFit Bottom Up



Getting Started




Remove the shade from the package. Save the packaging until the shade is installed and working to your satisfaction.

Recommended Tools

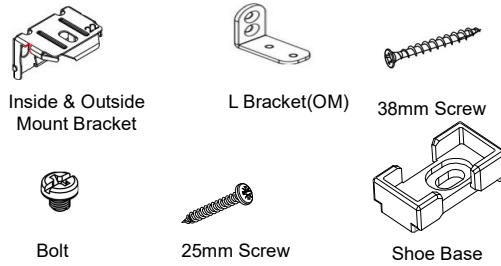
- Power drill and drill bit
- Measuring tape
- Screwdriver
- Level
- Pencil



You will need to use the following fasteners for your particular mounting surfaces:

Surface	Fastener
Wood	M3.5x25mm Screws (Provided) 
Drywall/Plaster	Wall Anchors, Expansion Bolts (Not Provided) 
Metal	Sheet Metal Screws (Not Provided) 

Check Hardware

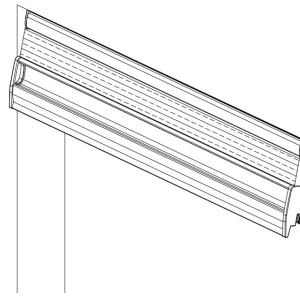


Step1. Prepare the Shade for Installation

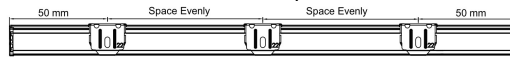
Carefully unwind the cord in the opposite tied direction. Remove the cardboard and PE bag. Refer to model diagrams for proper installation.

Step2. Shoe Base and Bracket Installation

Place the shade in the desired position and mark the ends of the shade.

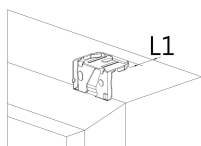


Mount the brackets 50mm from each end of the rail. All brackets must be aligned and evenly spaced when more than two brackets are required.

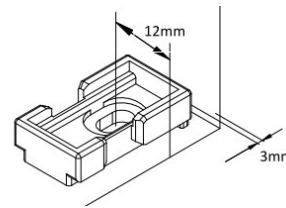
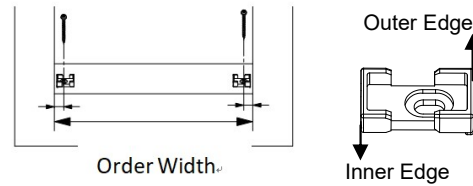


Inside Mount

For Top standard rail:: The L1 min. distance of 8mm from the edge of the wall to the front of brackets. Mount brackets with one pcs M3.5x25mm screw

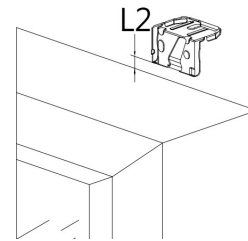


For Bottom shoe base: Match the outer edge of the shoe base to the marked position. The min. distance from shoe base screw hole to the edge of the front window frame is 12mm and from both side edge of window to edge of shoe base is 3mm. Install the shoe base with 1 pc M3.5x25mm screw.

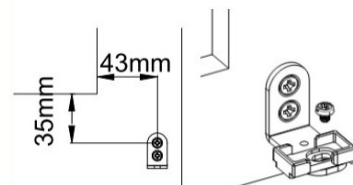


Outside Mount

For Top standard rail: Mount brackets with two pcs M3.5 x 25mm screws and align them horizontally.



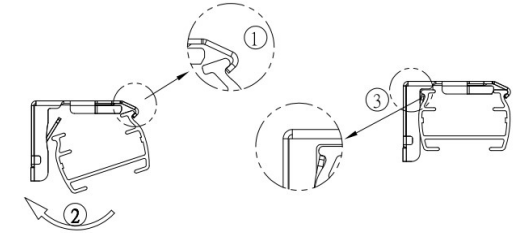
For Bottom shoe base: use two 3.8x38mm screws to fasten the L bracket. Once the L bracket is installed. Use one M3 x 3.6mm Bolt to attach base.



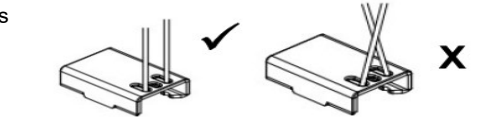
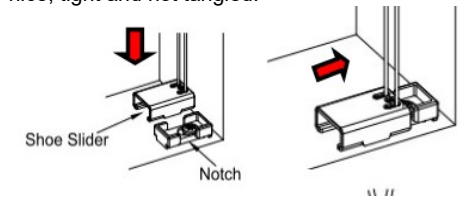
Recommendation: avoid the gypsum board surface.

Step3: Install the Shade

Attach the Top rail in the front edge of the clip and push the back of the rail upwards (till it clicks in).



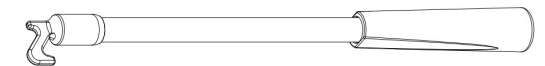
Install the shoe slider onto shoe base by pushing down the shoe slider from top of the notch then slide to the side to match the shoe base. Make sure that cords are nice, tight and not tangled.



For child safety, please check and ensure that there are no loose cords after the shade is completely installed.

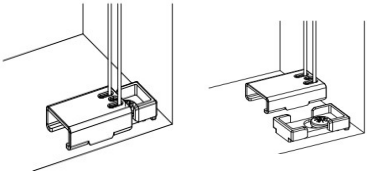
Step4: Operate the Shade

After the shade is completely installed, Please hold groove of the bottom rail to operate the shade to the top/bottom and adjust the shade to level. Then you may operate the shade to any desired position. When the shade is installed at a high position, Please use Fiberglass Pole to operate the shade upwards and downwards.

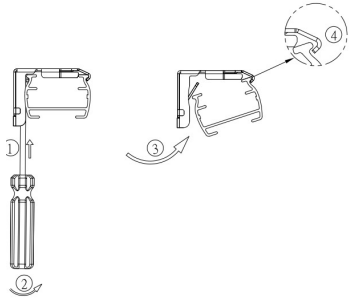


Step5: Remove the Shade

Fully raise the shade to the standard rail. Remove the shoe slider from the shoe base.



Insert screwdriver into the gap between the back of the top rail and the bracket. Gently maneuver the screwdriver toward yourself to pry the bracket.



Cleaning Instructions

Routine cleaning will help maintain the beauty of your shade. The shade can be cleaned by using a soft brush, vacuumed with a low suction hand-held vacuum, cleaned ultrasonically (specify that a mild solution must be used and that the head rail should never be immersed in liquid), or dampen a clean cloth with a warm water and mild detergent solution to dab the spot until it's gone (do not rub!).

Troubleshooting

Problem	Solution
The shade will not snap into the mounting brackets	Check if Top mounting brackets are aligned and locked in place. Refer to below drawing 